

BT55

<Product Description>

- BT speaker microphone for Bluetooth radio, smartphone, and dongle.
- Rotary power & volume control switch, phone answer / rejection key, and PTT button is embedded.
- Features mini LED lamp on the top of the speaker for a user in a dim environment.
- The desktop charger port allows you to charge easily, built-in micro USB charging also.



<Specification>

Type: Bluetooth Speaker Microphone
 Operating Temp: $-20^{\circ}\text{C} \pm 2^{\circ}\text{C} \sim 50^{\circ}\text{C} \pm 2^{\circ}\text{C}$
 Approx. Weight: 120g
 Size: 5cm x 7.5cm x 3.0cm

- Fully Qualified Bluetooth v5.0.
- Echo cancellation, noise reduction, also extended features.
- High Quality DAC, Qualcomm CVC built-in.
- 80MHz RISC MCU and 80MIPS Kalimba DSP.
- Fast Current (200mA) battery charge.
- RoHS compliant.
- HSP / HFP / A2DP / AVRCP / SPP profile support.
- Speaker Output: 2W.
- PTT function: built-in.
- Talking Range: Bluetooth class 2, 10 meters.
- Display LED: Blue and Red.
- DC Current: 25 mA (Average).
- Battery: 1000mAH, none replaceable.
- Talk Time: 40 Hours



Federal Communication Commission Interference Statement

This equipment has been tested and found to comply with the limits for a Class B digital device, pursuant to Part 15 of the FCC Rules. These limits are designed to provide reasonable protection against harmful interference in a residential installation. This equipment generates uses and can radiate radio frequency energy and, if not installed and used in accordance with the instructions, may cause harmful interference to radio communications. However, there is no guarantee that interference will not occur in a particular installation. If this equipment does cause harmful interference to radio or television reception, which can be determined by turning the equipment off and on, the user is encouraged to try to correct the interference by one of the following measures:

- Reorient or relocate the receiving antenna.
- Increase the separation between the equipment and receiver.
- Connect the equipment into an outlet on a circuit different from that to which the receiver is connected.
- Consult the dealer or an experienced radio/TV technician for help.

FCC Caution: Any changes or modifications not expressly approved by the party responsible for compliance could void the user's authority to operate this equipment.

This device complies with Part 15 of the FCC Rules. Operation is subject to the following two conditions:

- (1) This device may not cause harmful interference, and
- (2) This device must accept any interference received, including interference that may cause undesired operation.

This equipment complies with FCC RF radiation exposure limits set forth for an uncontrolled environment. To maintain compliance with FCC RF exposure compliance requirements, please avoid direct contact to the transmitting antenna during transmitting.

Please keep product 20cm away from your body or bystander during the radio operation. The typical handheld two-way radios were certified under mobile usage condition (i.e. keep 20cm away from the user body) and use of such radio closer than 20cm may exceed the US RF exposure limit and shall be avoided.



BT55



- 1. Push-to-Talk
- 2. Back Clip



- 6. Power / Volume Control
- 7. Cell Phone Key / Pairing button
- 8. Earphone Jack
- 9. Micro USB



- 3. Microphone
- 4. Speaker
- 5. Logo Plate



- 10. LED Indicators
- 11. Desktop Charger



BT55 State and LED Flashing Pattern

BT55 State & Button Press	LED Message	Function
BT55 is OFF	No LED	BT55 OFF
When BT55 is OFF, rotate power switch clockwise	Both Blue & Red LED are lighten for 1 second	BT55 is turned ON
When BT55 is ON, rotate power switch anticlockwise	Red LED flashes 2 times then OFF	BT55 is turned OFF
When BT55 is ON, Press and hold pairing button for 2 seconds	Red & Blue LED flashes alternatively	Get BT55 into pairing mode
Paired	Blue LED flashes once every 2 seconds	Paired
Unpaired or lost link	Blue LED flashes twice every 2 seconds	No link, no pair

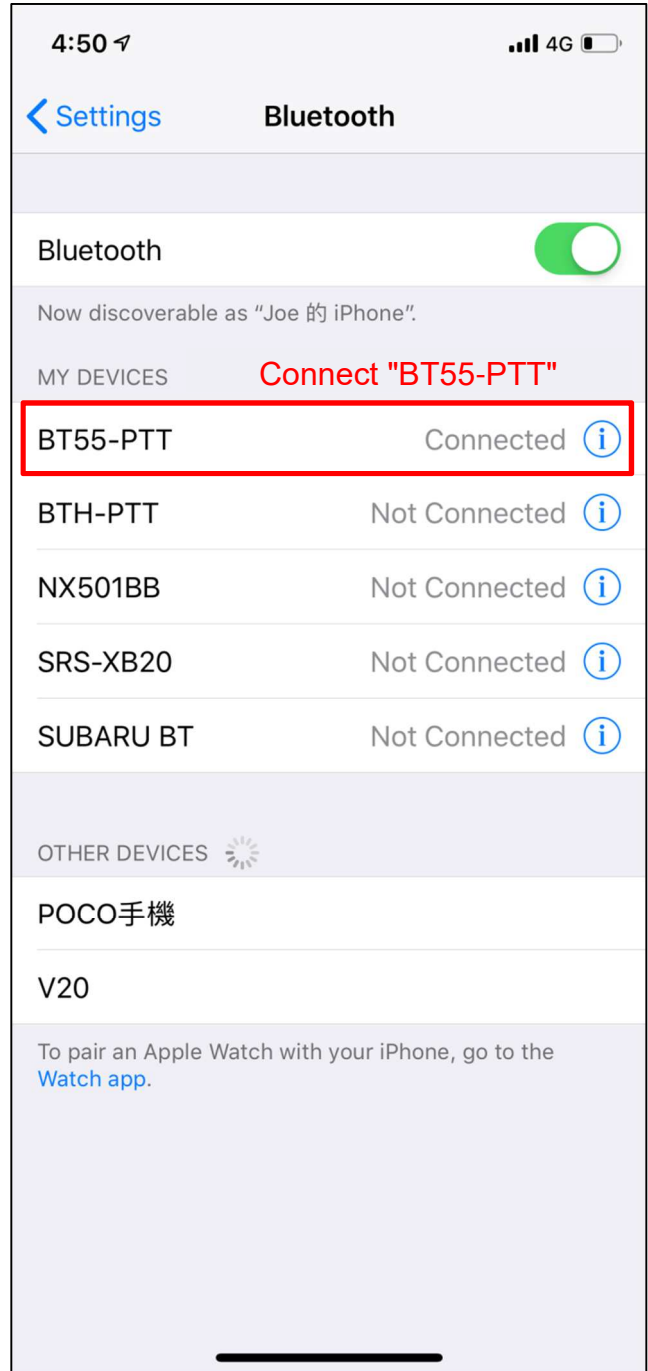


BTT55 User manual (For Zello)

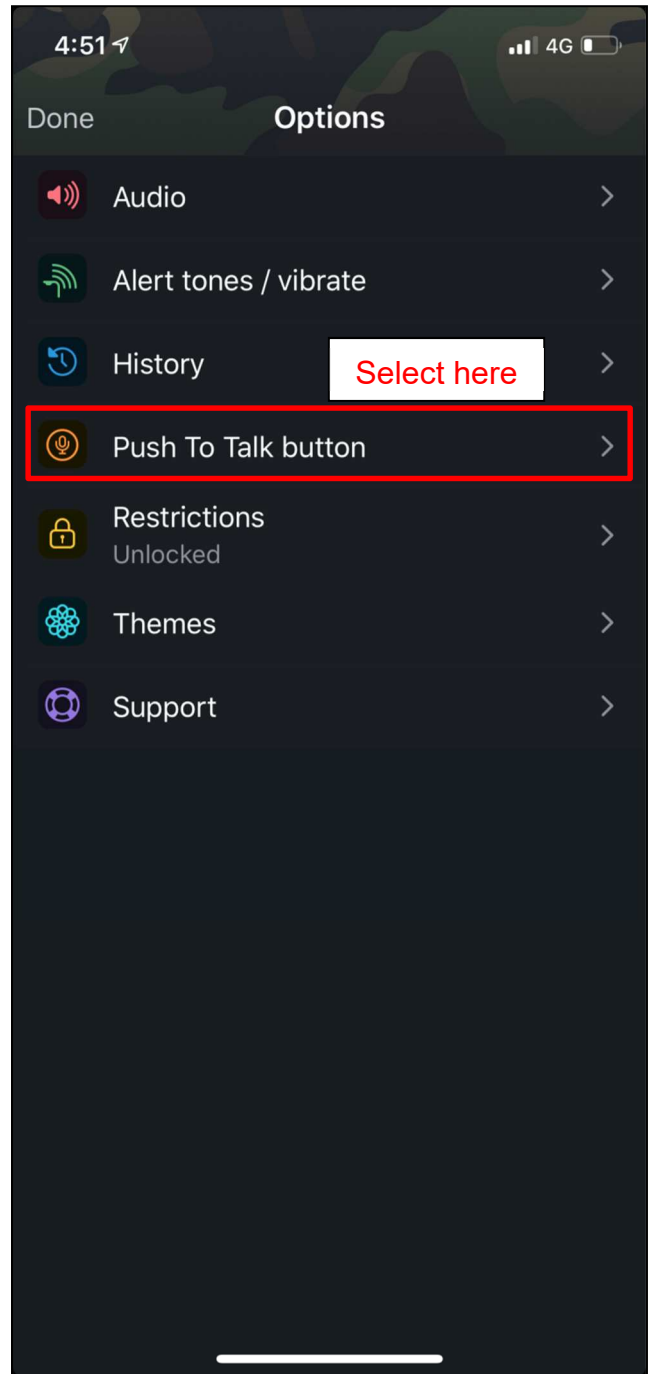
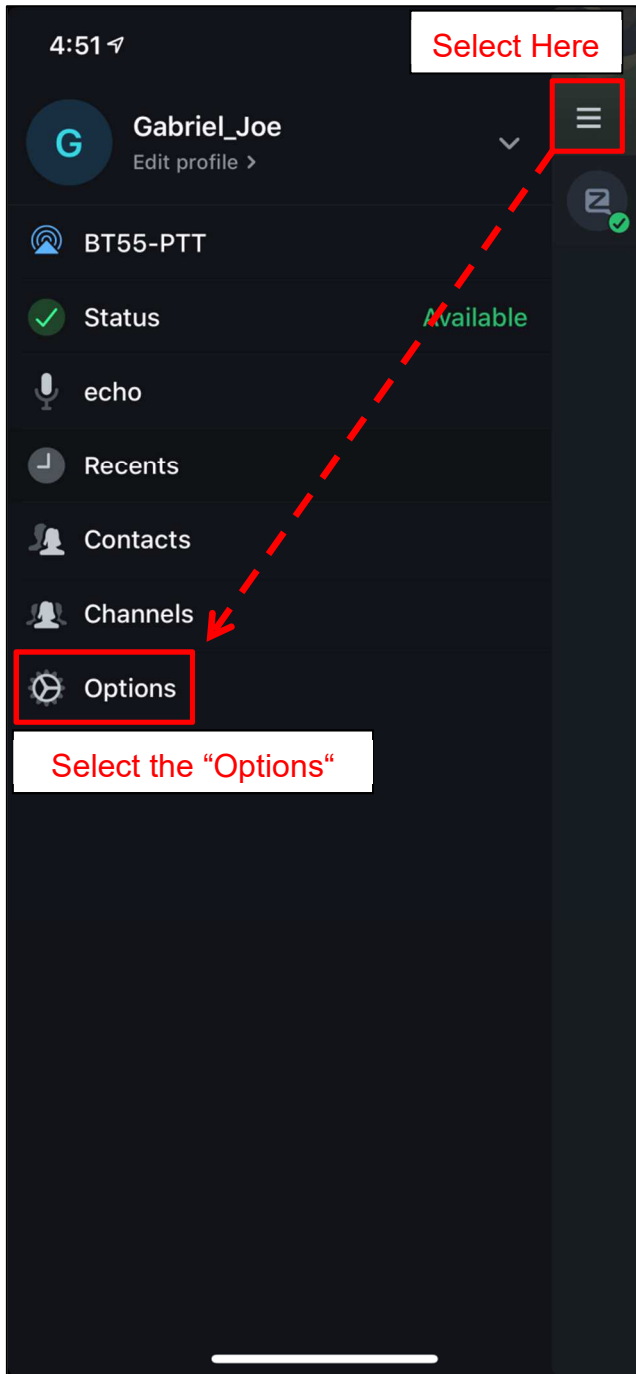
1. Turn the knob clockwise on the top of the BT55 to turn on the power.
2. Press and hold the pairing button 2 seconds for entering to pairing mode when you see the Blue LED flashes twice for every 2 seconds.



3. Select the "Settings" button on the display of the smartphone and go to the menu of the Bluetooth connector.
Then select the "BT55-PTT" to connect.
(Please note that the "Bluetooth" button must be turned on.)



4. To set "Push To Talk button" before using the "Zello" app.
 - a. Open the "Zello" app and select the three horizontal lines in the upper left. Then select the "Options".
 - b. In the "Options" find and select the "Push To Talk button".



- c. Select the "Add New Device" button.
Press the PTT button when "Press button now..." is displayed on the smartphone.
- d. "Zello" will find the PTT-Z in a few seconds.
Select and connect the "PTT-Z".
- e. Now, the BT55 can be worked with "Zello" app. Enjoy our product.

