

Federal Communication Commission Interference Statement

This equipment has been tested and found to comply with the limits for a Class B digital device, pursuant to Part 15 of the FCC Rules. These limits are designed to provide reasonable protection against harmful interference in a residential installation. This equipment generates uses and can radiate radio frequency energy and, if not installed and used in accordance with the instructions, may cause harmful interference to radio communications. However, there is no guarantee that interference will not occur in a particular installation. If this equipment does cause harmful interference to radio or television reception, which can be determined by turning the equipment off and on, the user is encouraged to try to correct the interference by one of the following measures:

- Reorient or relocate the receiving antenna.
- Increase the separation between the equipment and receiver.
- Connect the equipment into an outlet on a circuit different from that to which the receiver is connected.
- Consult the dealer or an experienced radio/TV technician for help.

FCC Caution: Any changes or modifications not expressly approved by the party responsible for compliance could void the user's authority to operate this equipment.

This device complies with Part 15 of the FCC Rules. Operation is subject to the following two conditions: (1) This device may not cause harmful interference, and (2) this device must accept any interference received, including interference that may cause undesired operation.

This equipment complies with FCC RF radiation exposure limits set forth for an uncontrolled environment. To maintain compliance with FCC RF exposure compliance requirements, please avoid direct contact to the transmitting antenna during transmitting

RF Exposure Warning!

Please keep product 20cm away from your body or bystander during the radio operation. The typical handheld two-way radios were certified under mobile usage condition

(i.e. keep 20cm away from the user body) and use of such radio closer than 20cm may exceed the US RF exposure limit and shall be avoided.

PTT-220-VZ PUSH-TO-TALK USER GUIDE

For use with Zello and other push-to-talk apps on Android smart phones



This manual
applies to the
Mobility Sound
PTT-220-VZ
Push-to-Talk
transmitter

Mobility Sound PTT-220-VZ
Model No.: PTT-220-VZ
Made in Taiwan

All other product or service names are the property of their respective owners.

© 2014 Mobility Sound Technology Ltd.,
All Rights Reserved



Controls and connection

PTT Button

This button is used to activate the push-to-talk feature of the Zello app



Power Button

Holding down this button for one second will turn the Push-to-Talk device on and off

Status LED

The LED flashes messages that let the user know the current status of the Push-to-Talk device

Dust Cover

Used to cover the USB port when the PTT-220-VZ is not being recharged



USB Charge Port

This port is used to connect the PTT-220-VZ to any powered USB connector for recharging



Clothing Clip

The alligator-type clip can be used to secure the Push-to-Talk to the user's clothing during use. The clip can be rotated to allow the device to be better positioned



STEP ONE: Charging the Push-to-Talk

The PTT-220-VZ has an internal Lithium Ion rechargeable battery pack which must be charged prior to operation, and must be recharged regularly. A fully charged battery will provide more than 12 hours of operation before needing to be recharged. However, operating time can vary depending on usage and the condition of the battery pack. Recharge the battery regularly.



STEP ONE: Charging the Mobility Sound PTT-220-VZ

The Mobility Sound PTT-220-VZ has an internal Lithium-ion rechargeable battery pack which must be charged prior to operation, and must be recharged regularly. A fully charged battery should provide more than 12 hours of operation before needing to be recharged.

To charge the Mobility Sound PTT-220-VZ:

- Ensure the Mobility Sound PTT-220-VZ is turned off, using the power button located on the side of the device.
- Plug the USB charge port on the bottom of the PTT-220-VZ into any powered USB connector. You will first need to remove the protective rubber dust cover. (To prevent dust and moisture from damaging your PTT-220-VZ, always ensure this cover is in place when you are not charging the device).
- When charging, the LED on the PTT-220-VZ will show a solid blue light. When the device is done charging, the LED light will turn off.
- The Mobility Sound PTT-220-VZ takes approximately 4.5 hours to charge. Actual charge time will vary depending on several factors including the battery's charge state, condition, and age.

Charging Cautions:

- Use only a POWERED USB port for charging Non-powered ports (such as on a USB hub) will **NOT work**.
- Do not use a wall charger that appears to be damaged. (Example: frayed wires, melted plastic, etc.)
- Do not tamper with or modify the Mobility Sound PTT-220-VZ or the charger.
- Always turn **OFF** the power when charging the Mobility Sound PTT-220-VZ.



Pairing With a Smart Phone



The PTT-220-VZ Push-to-Talk is designed to work with smart phones running the Android operating system. Prior to normal operation, the phone and Push-to-Talk must be paired together using the following process:

1. Activate the pairing mode on the Push-to-Talk by holding down the PTT button while turning the device on. Continue to hold down the PTT button until the status LED on the PTT-220-VZ shows two blue flashes every second.
2. On your phone, go to **Settings > Bluetooth**. Move the Bluetooth slider to turn the phone's Bluetooth radio on.
3. Select "Search for Devices" from the phone's Bluetooth menu. The phone will scan for nearby Bluetooth devices and a list showing the names of nearby Bluetooth devices will be shown on the screen.
4. Choose "**PTT-220-VZ**" from the list.
5. Keep the phone and Push-to-Talk near each other and wait a few seconds. The devices will pair to each other.

Reconnecting a Previously Paired Push-to-Talk and Phone

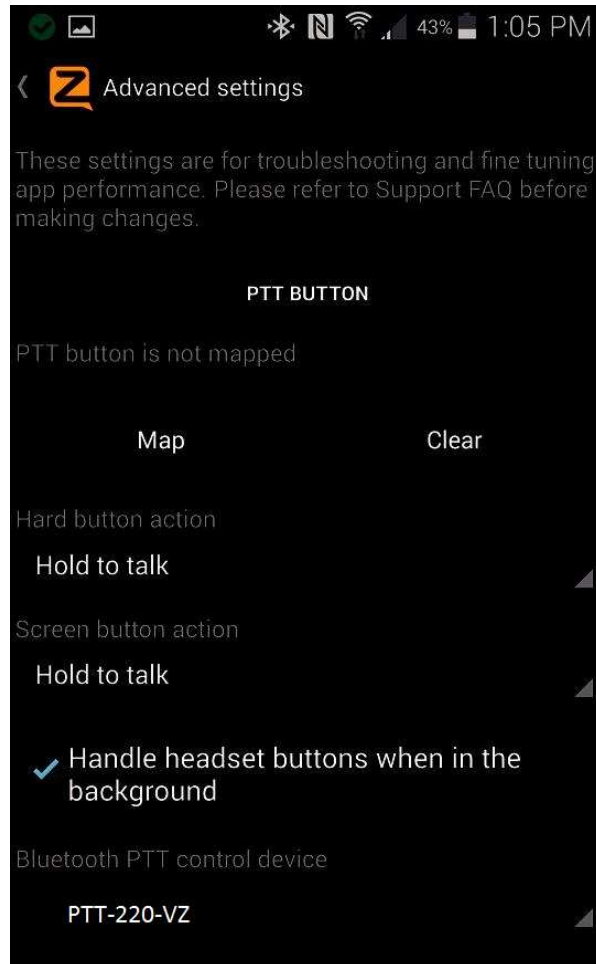
Once the PTT-220-VZ and phone have been successfully paired together, both devices will remember that connection. They will reestablish their link whenever the Push-to-Talk and phone are both powered on and in within range of each other, as long as the Bluetooth radio is enabled in the phone. Re-establishing this connection can take 10-60 seconds.

In the event that the phone and Push-to-Talk do not automatically reestablish their link, simply press the PTT button on the PTT-220-VZ to restore the connection.



Setting up The Zello APP

To get the Zello app on your phone and set it up to work with the PTT-220-VZ Push-to-Talk, do the following:



1. Install Zello from your Zello@Work network, or download the app from the Google Play store (for Android) or the Apple App Store (for iOS).
2. Make sure that your phone's Bluetooth radio is enabled, and that the Push-to-Talk are powered on and that the Push-to-Talk and phone are connected to each other.
3. Open Zello and go to Menu > Options > Under the Hood.
4. Under "Bluetooth PTT Control," choose "PTT-220-VZ". You should see a popup indicating the device control has been activated. If you don't see it, you may need to power cycle the Push-to-talk and repeat this step.
5. Open the Talk screen in Zello (the screen with a big round button). In the bottom-left corner of the screen, tap-hold and slide to the Bluetooth icon to activate the PTT device in Zello.



Using the Push-to-Talk with Zello

Once setup, you will be able to use the Push-to-Talk with the Zello app, even if Zello is running the background.

-To activate Zello's push-to-talk feature, press and hold the PTT button on the PTT-220-VZ.

-When Zello is transmitting a call, audio will be picked up by the phone's built-in microphone or by the microphone in your wired hands-free accessory, if one is plugged into the phone.

-Incoming calls received by Zello will be heard over the phone's built-in speaker or through the earphone in your wired hands-free accessory, if you are using one.

STATUS LED MESSAGES

The meanings of the various LED messages shown by the MobilitySound PTT-220-VZ are shown on the following table

LED INDICATION	MEANING
No indication	Device is powered off
Two Blue flashes every second	Pairing mode
One Blue flashes every 6 seconds	Bluetooth connected
Continuous solid red	PTT button pressed
Repeated rapid blue flash	Bluetooth link lost/Not connected
One blue flashes every second	Battery low
Continuous solid blue(when connected charging)	Device is in charging
No indication (when connected charging)	Device charging completed



SPECIFICATION

SPECIFICATION	
Operating Temperature	-20 °C to 50 °C
Storage Temperature	-40 °C to 80 °C
Size	65mm(H) x 30mm(W) x 17mm(D)
Weight	25 grams
Bluetooth version	Fully qualified Bluetooth 2.1
Chip set	CSR BC5 + 16MB external flash
Receiver sensitivity	-82 dbm (typical)
Bluetooth power class	Class 2
Maximum range	10 meters
Display	Two-color LED
Bluetooth profile support	SPP(Serial Port Profile)
DC input	5V DC
Current Draw	16mA(average), 20mA(maximum)
Battery	240mAh Lithium-ion
Charging type	USB



SUPPORT AND WARRANTY

Mobility Sound Technology Ltd., warrants this product against defects in materials or workmanship for a period of one year from the date of retail purchase. **Mobility Sound** will repair or replace a defective unit, at our option, without charge for parts or labor. The limited warranty is extended only to the original purchaser. It does not cover damage or failure caused by or attributable to Acts of God, abuse, misuse, improper or abnormal usage, faulty installation, improper maintenance, lightning, or other incidences of excessive voltage, or any tampering or repairs by other than a Mobility Sound Technology Ltd authorized repair facility. It does not cover replacement of consumable parts, transportation costs, or damage in transit.

Repair or replacement under the terms of this warranty does not extend the terms of this warranty. This warranty can only be modified by an officer of **Mobility Sound**, and then only in writing. Should this product prove defective in workmanship or material, the consumer's sole remedies shall be such repair or replacement as provided by the terms of this warranty. Under no circumstances shall **Mobility Sound** be liable for any loss or damage, direct, consequential, or incidental, arising out of the use of or inability to use this product. Some states do not allow limitations on how long an implied warranty lasts or the exclusions or limitations of incidental or consequential damages, so the above limitations or exclusions may not apply to you. This warranty gives you specific legal rights.

For support or warranty service on your **Mobility Sound** product, contact us at info@mobilitysound.com or visit us on the web at www.mobilitysound.com

COPYRIGHT AND TRADEMARK INFO

© 2014 **Mobility Sound Technology Ltd.**, All rights reserved.

DISCLAIMER: The Bluetooth wireless link used by **Mobility Sound** products is an open standard, unsecured technology. As such, it is not recommended for first-responder or other mission critical users.

